

Boloni
INTERNATIONAL

TOTAL SOLUTION

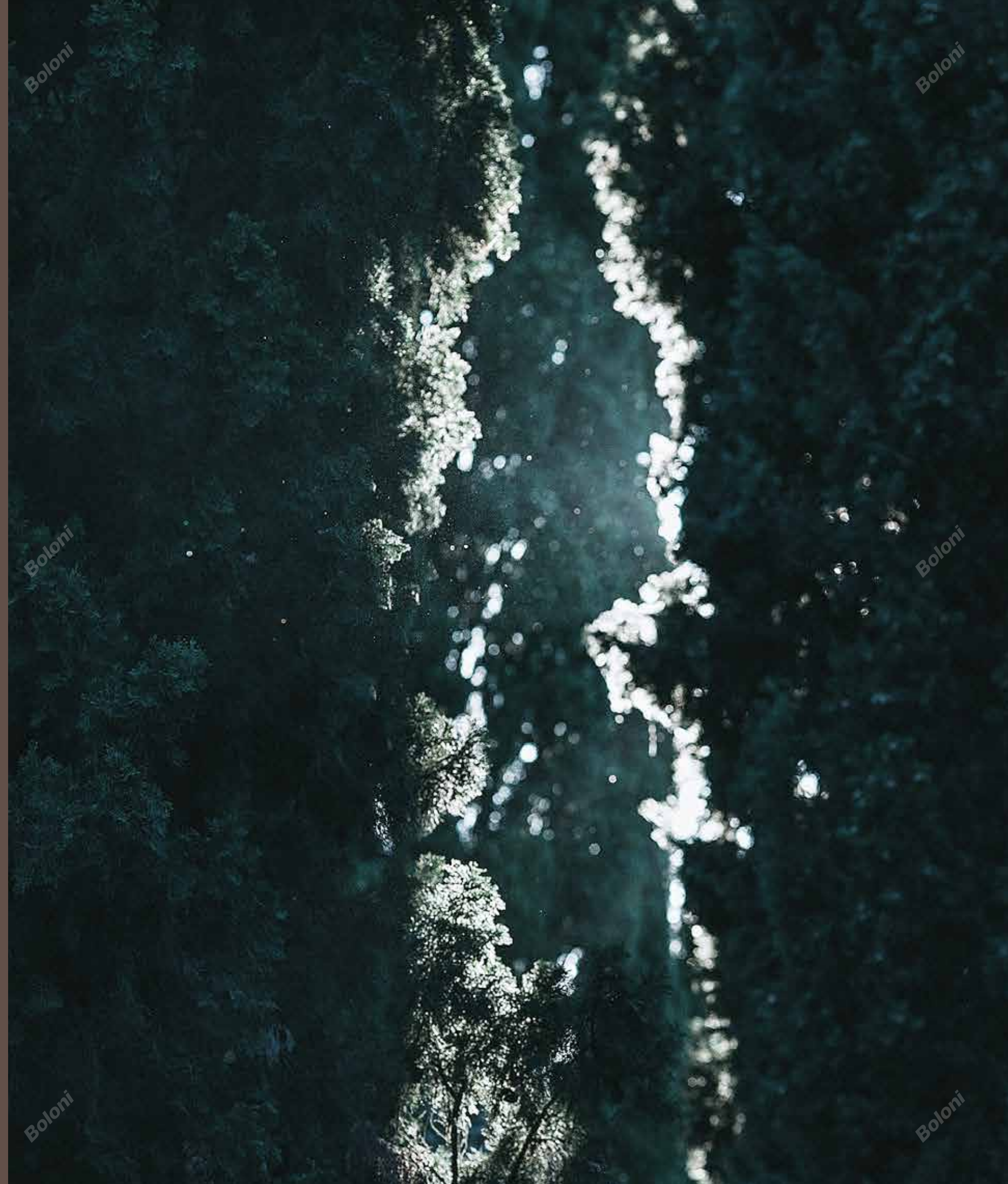
*KITCHEN CABINET
BATHROOM VANITY
WALKING CLOSET
FURNITURE
INTERIOR DOOR
WALL PENEL*

INDICE_INDEX

03	THE LATEST DESIGN TREND
17	KITCHEN CABINET
54	BATHROOM VANITY
66	LANE CLOUMN SYSTEM
72	WORDE WALL BACKPLATE SYSTEM
78	WOODEN SWING DOOR PANEL
94	LEATHER SWING DOOR PANEL
98	GLASS SWING DOOR PANEL
112	GLASS SLIDING DOOR PANEL
116	INTERIOR DOOR SYSTEM
144	WALL PANELING SYSTEM

THE LATEST DESIGN TREND – MELODY BEYOND

Fineness and smoothness, spicing up life
Eagerness and hope, enlivening inspiration



Boloni

Boloni

Boloni

Boloni

Boloni

Boloni

Boloni

Boloni

Boloni



MELODY BEYOND



Boloni

Boloni

Boloni

Boloni

77 The Latest Design Trend

Boloni

MELODY BEYOND

Boloni

Boloni

Boloni



MELODY BEYOND

Boloni

Boloni

Boloni

117 The Latest Design Trend

MELODY BEYOND

Boloni

Boloni





Boloni

Boloni

Boloni

Boloni

Boloni

The Latest Design Trend / 14

MELODY BEYOND

Boloni

Boloni

Boloni



Boloni

Boloni

Boloni

Boloni

15/ The Latest Design Trend

Boloni

MELODY BEYOND

Boloni

Boloni

Boloni

Boloni

Boloni

Boloni

KITCHEN CABINET

Living in the kitchen,
make the space multifunctional which could be extended and full of possibilities.

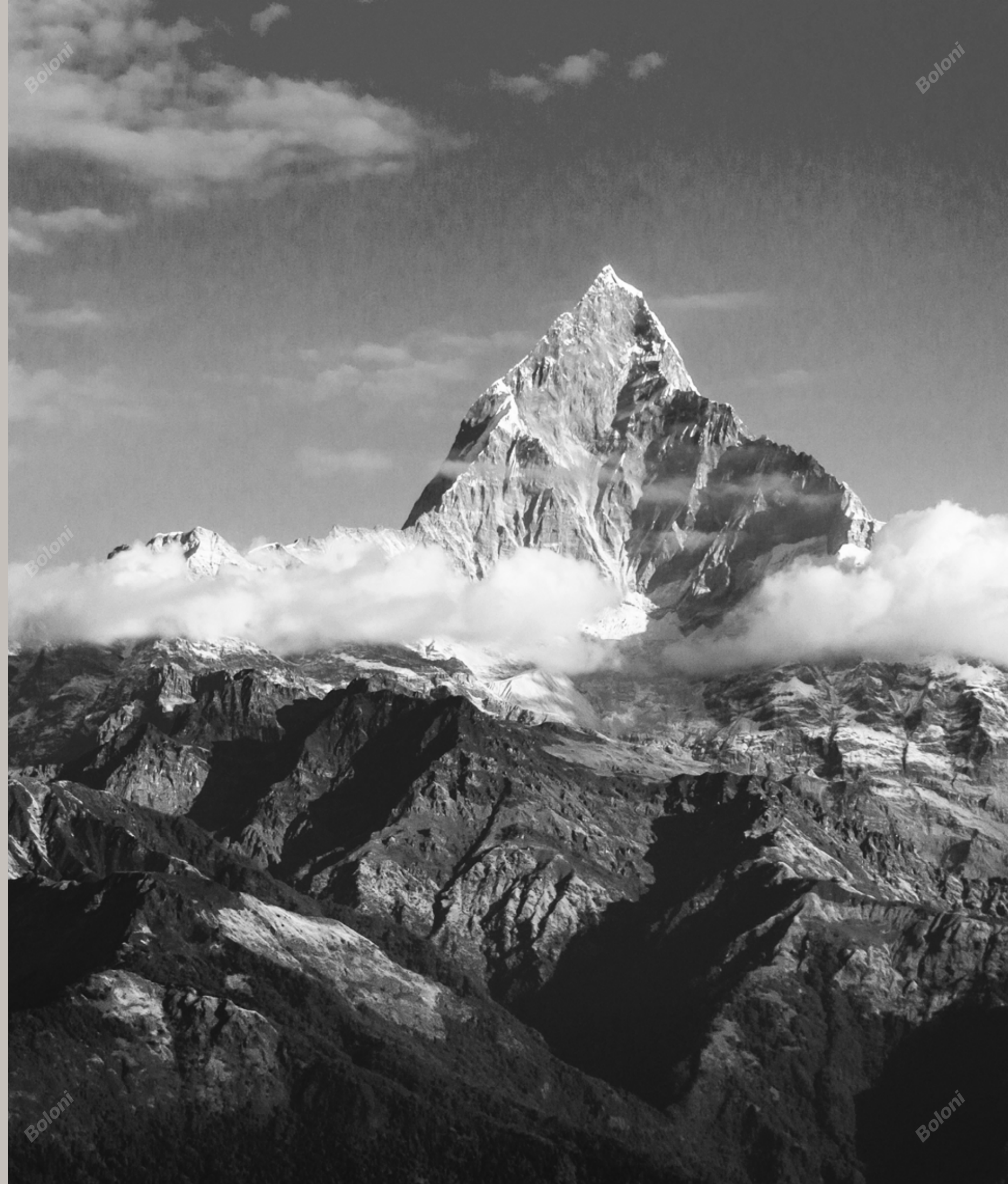
Boloni

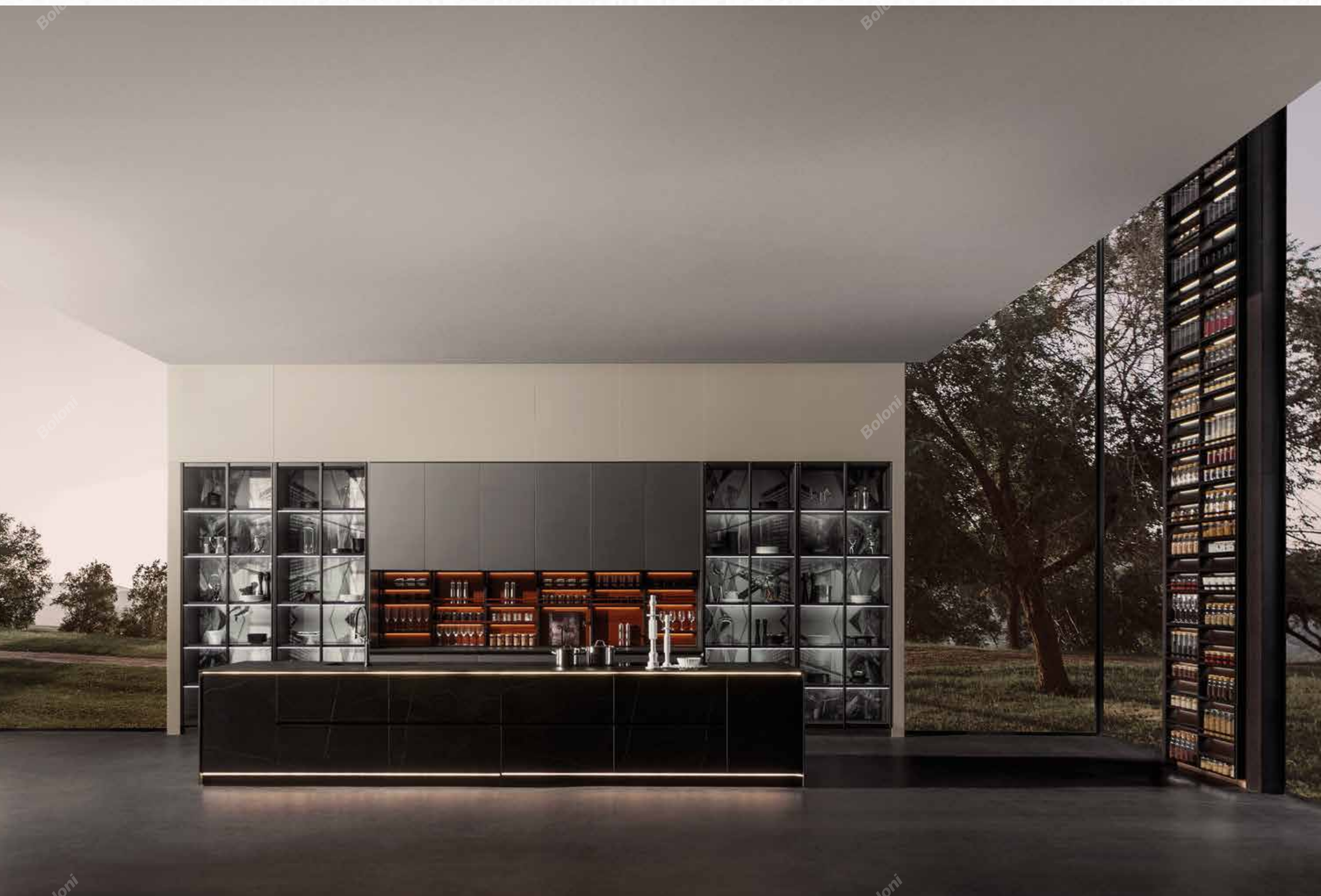
Boloni

Boloni

Boloni

Boloni





COMO

Door panel: Metal Lacquer & Slab Panel

Accessories: Blum/Others

Countertop: Sintered Stone

Combined with the most popular minimalist stone decorative panel, it greatly enhances the style of the space.

The appearance is noble and elegant while the details reveal humanized design.



BETWEEN SYSTEM

The patent of BOLONI, Between System, extends the storage and also decorates the wall.



PATTERN

3D printing design back panel with the LED lighting shelves make the tall unit with more textures.



HANDLESS DESIGN

45° Integrated door panel makes the conjunction with casework perfectly fit.



LIGHTING SYSTEM

Automatic light system with voice control for more customization options.



SINTERED STONE

Full-pieces slab panel design on the drawer fronts, door panels, side panels and countertop INTEGRATED. Achieving zero formaldehyde after firing at 1300 degrees celsius.



Read White

Door panel: High Glossy Lacquer
Accessories: Blum/Others
Countertop: Slab/Dekton Stone
The white color reserves unknown and inclusiveness interpreted the idea of "advocated for colorless".
Brighten the world, make one with everything, and come for life, the myriad possibilities for the future.



LASER EDGING

The door panel adopts laser edging technology for zero edge and glue line, saving energy, protecting the environment while achieving extreme purity.



AUTOMATIC CONTROL

Design concept: Patented intelligent sensing technology enables free shift of the door panel between the "transparent mode" and "frosted mode" through "Duer", Baidu's artificial intelligence assistant. No need to open the door to check and take items. Through simple and elegant instructions, intelligent mobile island could be opened with one translational motion, activating the lifting hood and faucet, and starting the background light in the cabinet. Different light colors and brightness would be adjusted with the occasion or light indoor to best fit the emotion.



LIGHTING SYSTEM

Lighting customized for the atmosphere, with adjustable brightness, illuminance and color temperature, could fit the emotion with the best option.

STORAGE SYSTEM

With various sizes, the system could be matched with other common products in the house, such as amber. The internal space can be fully utilized while being flexible to meet various storage needs.

BETWEEN STORAGE SYSTEM

An exploration to the comfort brought by the storage system. The new Between System makes reasonable and efficient use of the space under the wall cabinet. It is equipped with a light guide backplate with controllable light tone and brightness, which can be upgraded to one with printing, as if it is a dreamy and beautiful light wall.



GODIVA

Door Panel: Wood Veneer&Slab
Panel
Accessories: Blum/Others
Countertop: Slab/Dekton Stone
The composite slab panel on the grey
aluminum frame is a
combination of luxury and under-
statement, full with practical and
technological.





317 Kitchen Cabinet



MATERIAL COMBINATIONS

Slab plate, metal aluminum frame and solid wood veneer are perfectly integrated on this cabinet, fully reflecting Boloni's mastery of new technology and new materials.

MELBOURNE

Door panel: High Glossy Lacquer &
Wood Veneer

Accessories: Blum/Others

Countertop: Silestone, Caesarstone
Quartz or Slab

Modern minimalism with clear distinction between black and white, and perfect combination of lines and planes divide the space more reasonable; And the evolution of the relationship between dining room and kitchen can stimulate you to the life of all imagination.





MINIMALIST MODERN DESIGN

Melbourne with the perfect combination of modern minimalist lines and surfaces, effectively divided the space, reasonable partition, a variety of materials can be adapted to this style



36/ Kitchen Cabinet



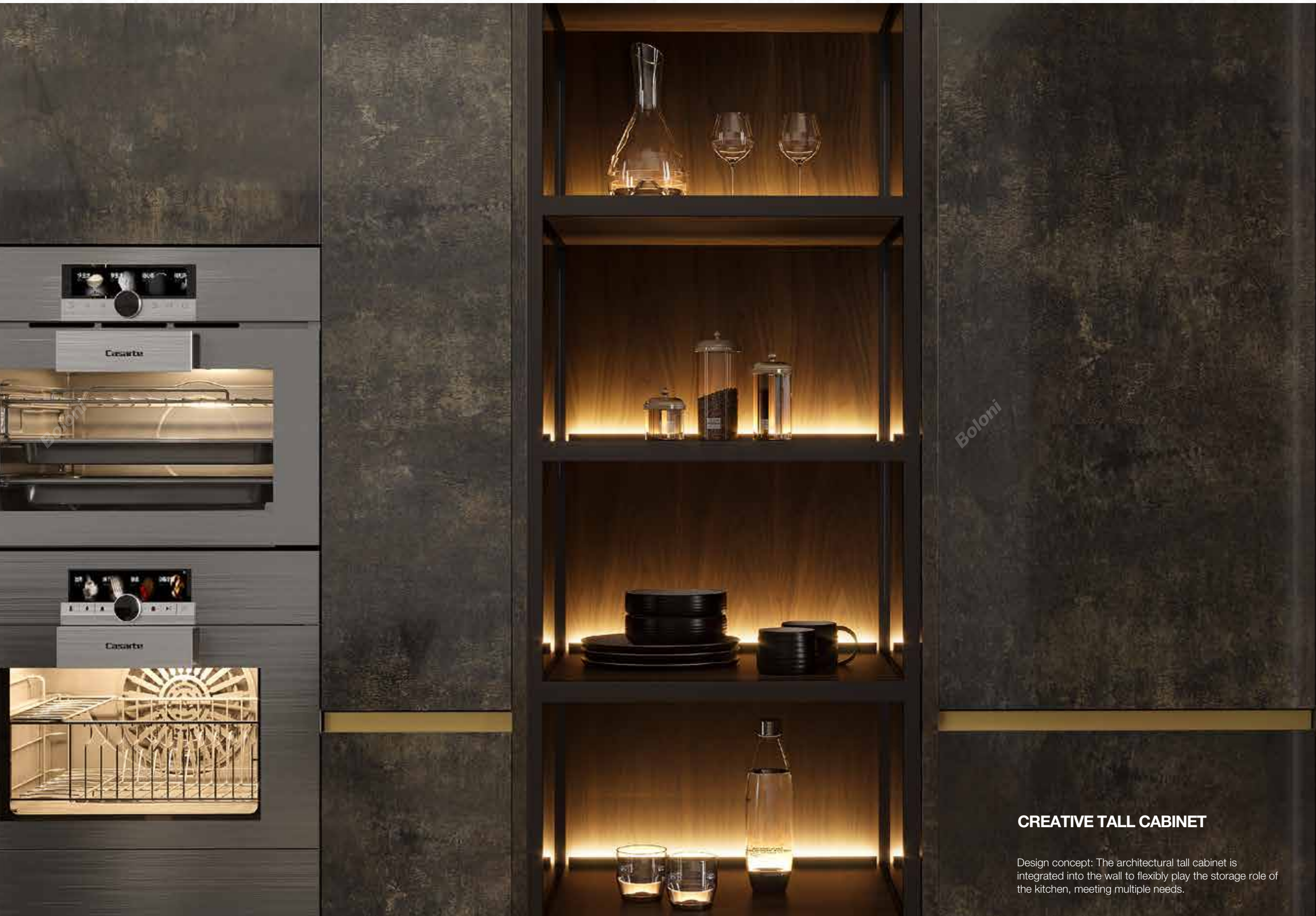
TRUE COLOR

Door Panel: Lacquer/Polyester Powder
Accessories: Blum/Others
Countertop: Silestone, Caesarstone Quartz or Slab
A simple and casual space with no complicated design.



LAPUTA

Door panel: Ultraviolet Curing
Accessories: Blum/Others
Countertop: Silestone, Caesarstone Quartz or Slab
Modern simple lines plus neat cloud stone pattern, capricious and practical with the blending of the partition door grille and UV paint process, making this set of cabinets unique and full of texture.



Boloni

CREATIVE TALL CABINET

Design concept: The architectural tall cabinet is integrated into the wall to flexibly play the storage role of the kitchen, meeting multiple needs.



LIGHTING SYSTEM

Design concept: The lighting system among ceiling, floor and cabinet could ensure the function of the main light source and supplement the light of the operating table, making the cooking environment more considerate and humanized.



ALUMINUM LAMINATE

Heat-resistant, moisture-proof, corrosion-resistant, easy to clean, and could effectively contain moisture and smoke in the kitchen. Exquisite color and matte surface make the entire space milder and more comfortable.



VENICE

Door panel: Matt Lacquer
Accessories: Blum/Others
Countertop: Silestone, Caesarstone Quartz or Slab
The "sumptuous" design here shows a feeling of space.
Luxury and pride are fully presented through the texture
and its extension.





BRAZIL

Door Panel: Tempered Glass
Accessories: Blum/Others
Countertop: Slab/Dekton Stone
The new material that breaks the boundary of traditional door panel, tempered glass, has the characteristics of easy to clean, smooth and crystal clear textures.

MARS

Door panel: PET & High Glossy
Lacquer
Accessories: Blum/Others
Countertop: Slab/Dekton Stone
Push the boundaries of tradition and
usher in a new future . The German
IMA laser edge sealing machine is used
around, and the six side non-offset
printing glue line is smooth and
beautiful.





FINLAND

Door panel: Melamine
Accessories: Blum/Others
Countertop: Quartz

Extreme simplicity, and pure and simple temperament, create a comfortable and peaceful kitchen space; The unique synchronous wood grain technology makes the wood grain and embossing of the cabinet door panel more warm, vivid, and natural, so that people have a kind of escape from the hustle and bustle of the city and return to the enjoyment of nature.

MAINE

Door panel: Matt Lacquer
Accessories: Blum/Others

Countertop: Silestone, Caesarstone Quartz or Slab
This series adopts French traditional style, abandoning overly complicated textures and decorations and simplifying lines. The simple design of the door panel is exactly retrospective in essence.





ZINICE

Door panel: High Glossy Lacquer
Accessories: Blum/Others
Countertop: Silestone, Caesarstone Quartz or Slab
New Chinese luxury style, modest luxury, pure and natural. Stay away from the hustle and bustle of the city and return to the tranquil nature. Watch the flowers in the courtyard bloom and wither. See the clouds in the sky scroll and unfold. This is the real happy life.

Boloni

Boloni

BATHROOM VANITY

Bathroom is a place for people to relax and unwind after their busy lives.
It has taken up a new definition, the "Second Bedroom".

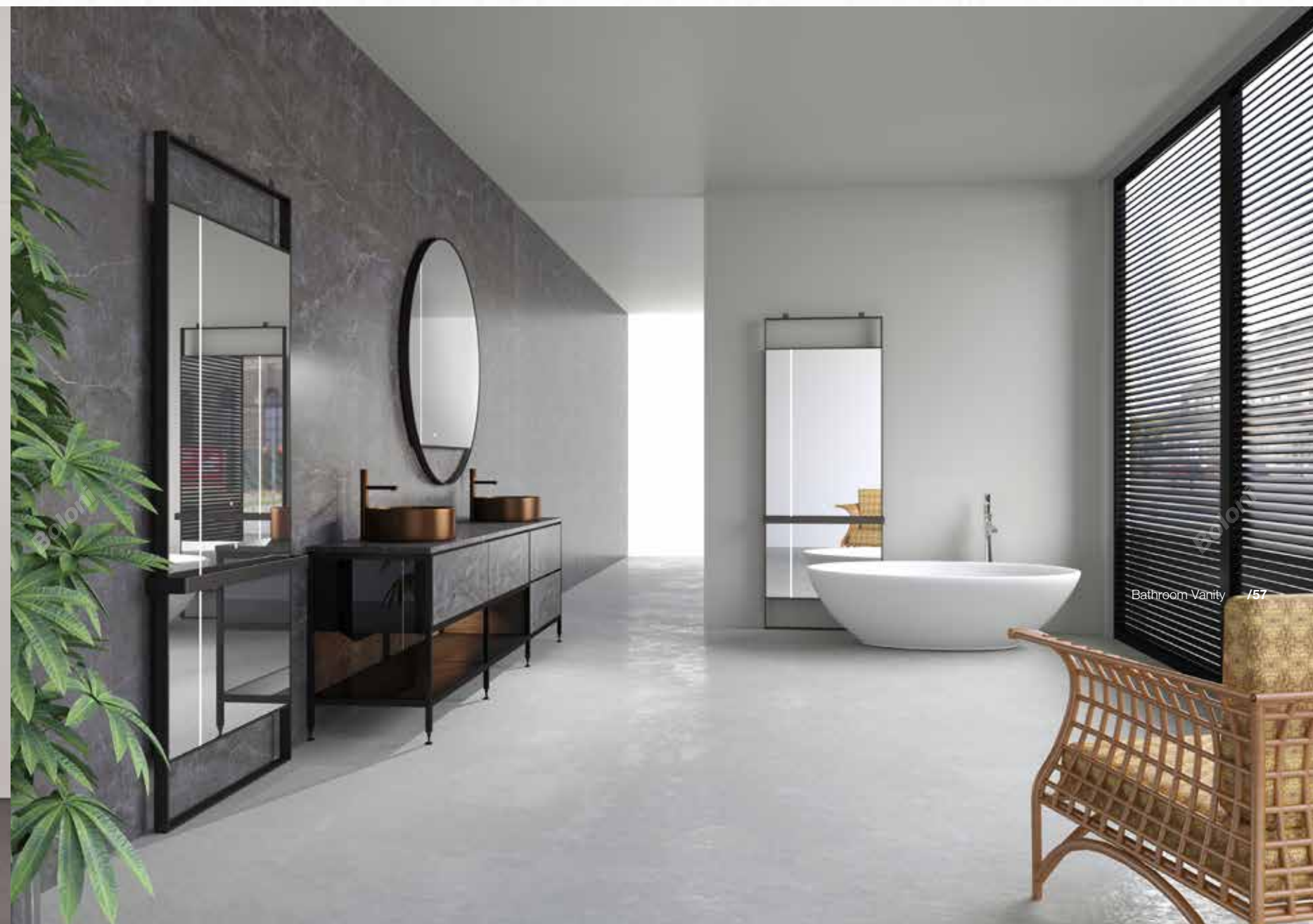
Boloni





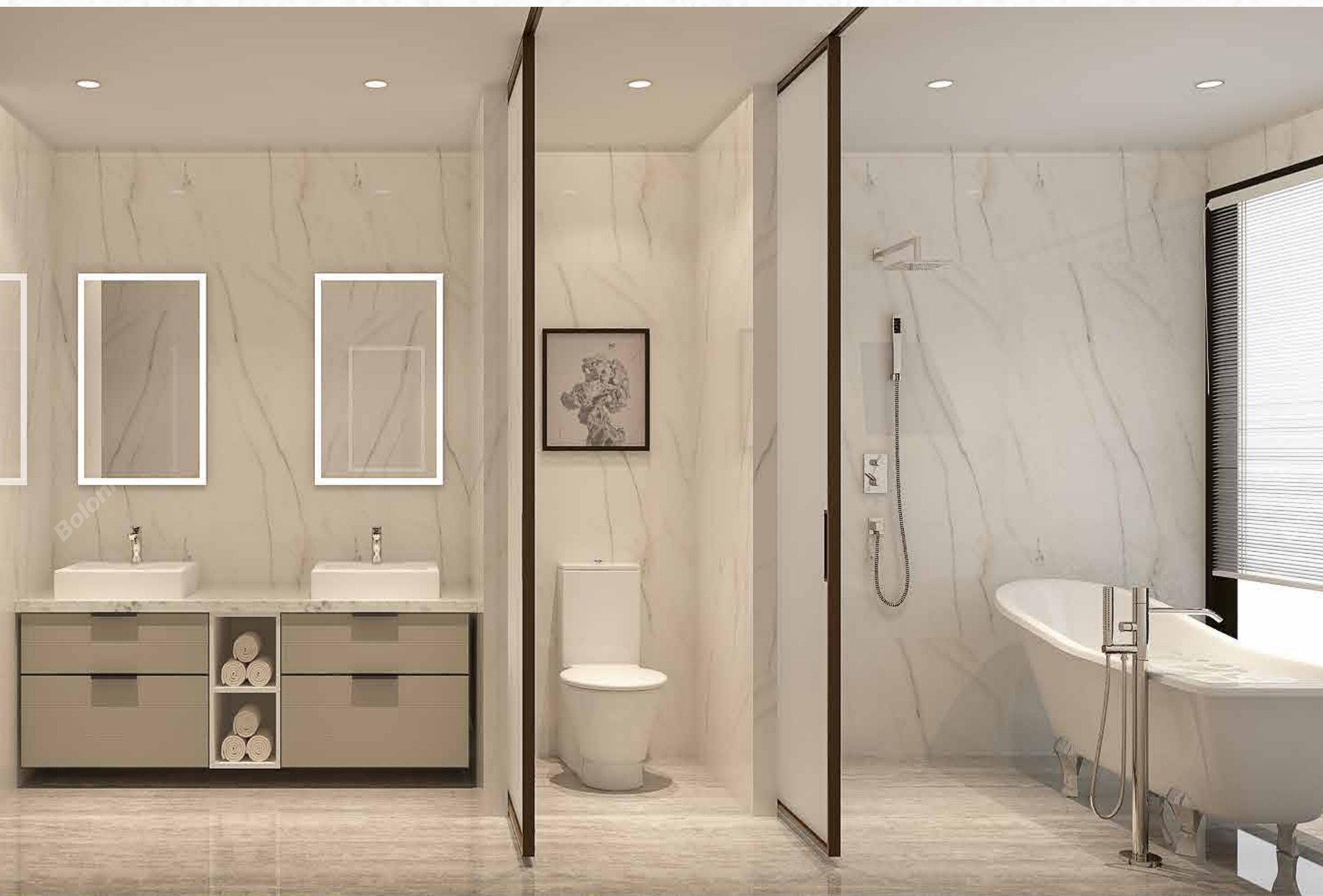
COMO

Door Panel: Slab Panel
Accessories: Blum/Others
Countertop: Slab/Dekton Stone
Combined with the most popular minimalist stone decorative panel, it greatly enhances the style of the space. The appearance is noble and elegant, while the details reveal humanized design



BERNIA - GODIVA

Door Panel: Wood Veneer & Slab Panel
Accessories: Blum/Others
Countertop: Slab/Dekton Stone
The composite slab panel on the grey aluminum frame is a combination of luxury and understatement, full with practical and technological.



BRAZIL

Door panel: Tempered Glass
 Accessories: Blum/Others
 Countertop: Silestone, Caesarstone Quartz or Slab
 Surface material. It adopts aluminum to edge the glass panel. The back of the glass door panel is treated with colored spray lacquer, with fine luster, soft color. The lacquer would not peel off or fade.

MELBOURNE

Door panel: High Glossy Lacquer & Wood Veneer
 Accessories: Blum/Others
 Countertop: Silestone, Caesarstone Quartz or Slab
 Modern minimalism with clear distinction between black and white, and perfect combination of lines and planes divide the space more reasonable.



TRUE COLOR

Door Panel: Lacquer/Polyester Powder

Accessories: Blum/Others

Countertop: Silestone, Caesarstone Quartz or Slab

Modern simple style, classic design with true color door panel shape, no redundant decoration, classic modern and simple combination of geometric shape. Through combination of straight lines and fine-textured lacquer, the entire space becomes smart and rational.

MARS

Door Panel: PET

Accessories: Blum/Others

Countertop: Silestone, Caesarstone Quartz or Slab

The industry's top German IMA laser edging machine is used for edging, also known as six-sided seamless edging, with no traces of edging, no glue lines. The edge is smooth and full, beautiful and complete.



LAPUTA

Door Panel: Matt Lacquer
Accessories: Blum/Others

Countertop: Silestone, Caesarstone Quartz or Slab

Modern simple style, classic design with true color door panel shape, no redundant decoration, classic modern and simple combination of geometric shape. Through combination of straight lines and fine-textured lacquer, the entire space becomes smart and rational.

FINLAND

Door Panel: Melamine
Accessories: Blum/Others

Countertop: Silestone, Caesarstone Quartz or Slab

Modern style features minimalist shape. The door panel can be matched with various handles to meet the overall design and use requirements. At the same time, it can also be matched with various cabinets to function without handle and achieve the unity of the overall shape.



ZINICE

Door Panel: High Glossy Lacquer

Accessories: Blum/Others

Countertop: Silestone, Caesarstone Quartz or Slab

Design Concept: The combination of metal lines and shaped core panels shows the "high-tech luxury" philosophy of Italian design, and perfectly interprets the noble and luxurious temperament on the wall panels, which is natural and royal.

VENICE

Door Panel: Matt Lacquer

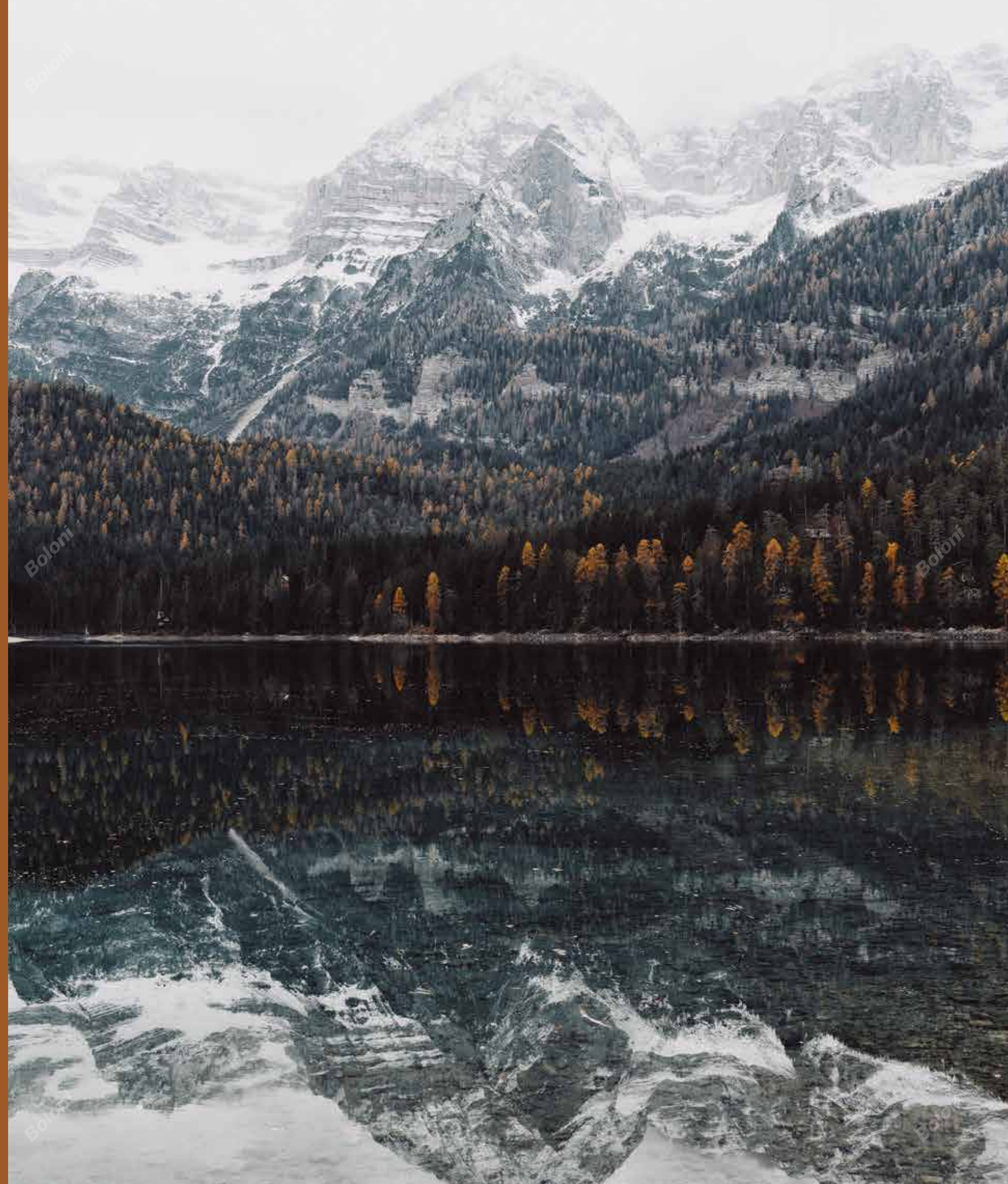
Accessories: Blum/Others

Countertop: Silestone, Caesarstone Quartz or Slab

Design Concept: The combination of classic elements and modernism makes the wall panel simple and classical.

LANE COLUMN SYSTEM

The walk-in closet ensures the cleanliness of clothes with a half-closed design while also displays the item within with transparency. The unique craft and exquisite details reveal the delicacy of the design.





LANE COLUMN SYSTEM

Material: Chocolate
Simple but Elegant, Taste Displayed Invisibly



Aircraft-wing Shelves & Cabinet

70/ Lane Column System



Material: Chocolate /Champagne gold



The column system is composed of metal columns, matching laminates and cabinet functional modules. With its unique temperament of minimalism and delicacy, freedom and order, seamlessness and solidity, it has become a must-have product for the world's top furniture brands.

Boloni

Boloni

Boloni

WORDE WALL BACKPLATE SYSTEM

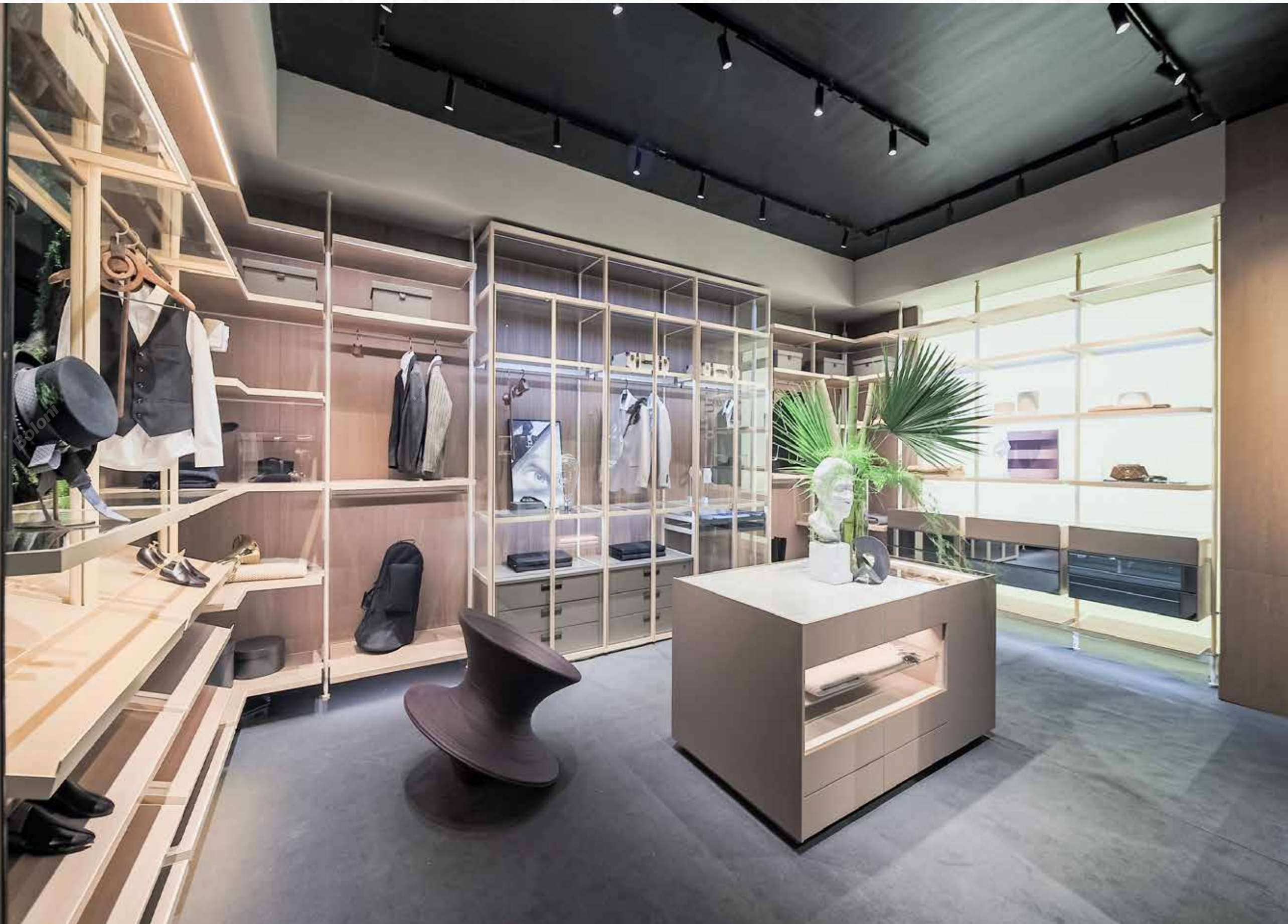
Beyond the traditional aesthetic framework, functional and beautiful





WORDE WALL BACKPLATE SYSTEM

Material: Chocolate + Decor panel
Beyond the traditional aesthetic framework,
functional and beautiful



MIRRORED BACKPLATE/SCARF RACK



ARCURATE TOP PANEL

Functional units such as laminate rods and drawers at different heights are set to meet the actual needs and form a "boundless but orderly" arrangement.

WOODEN SWING DOOR PANEL

The door is designed without handle and with pure and simple lines to create a comfortable and tidy home atmosphere. The integration of walls and cabinets (surrounded shape) not only effectively enhances the beauty of the entire space, but also perfectly expresses the resident's personality and satisfies visual perception.





DOOR PANEL - PURITY

Material: Matt Lacquer
Handle: Chocolate Color
Simple but tasteful minimalist style design fully embodies the design concept of "Less is More". Artistic creation should be simple not complex, veiled not obtrusive.

DOOR PANEL - PURITY

Material: Matt Lacquer
Handle: Chocolate Color

The integrated handle strengthens the metal texture of this door panel and creates a sense of line on the plane of the cabinet.





Material: Matt Lacquer
Wear-resistance, high leveling, smooth surface, tough paint film, high hardness, strong adhesion, water resistance, acid and alkali resistance, high color saturation of the paint film, full and round texture, no fading, good weather resistance.
Boloni's lacquer is second to none in the market in environmental protection.
With environmentally friendly panel, Boloni works to create a healthy home environment for customers.

DOOR PANEL - LAPUTA

Material: High Glossy UV Lacquer
Handle: Chocolate Color
The smart marble pattern represents the pursuit of nature and art. The panel is wear-resistant and smooth with full texture and good color fastness, and environmentally friendly, favored by youngsters.





Boloni

Boloni

Wooden Swing Door Panel /89

LAPUTA DOOR PANEL - 2

Material: Material: High Glossy UV Lacquer
Handle: Copper Wire
Boloni Laputa Black is mysterious and cold, perfectly presenting the industrial style while providing space for imagination. This style's crudeness and mysteriousness is exactly the key to make the space neutral.

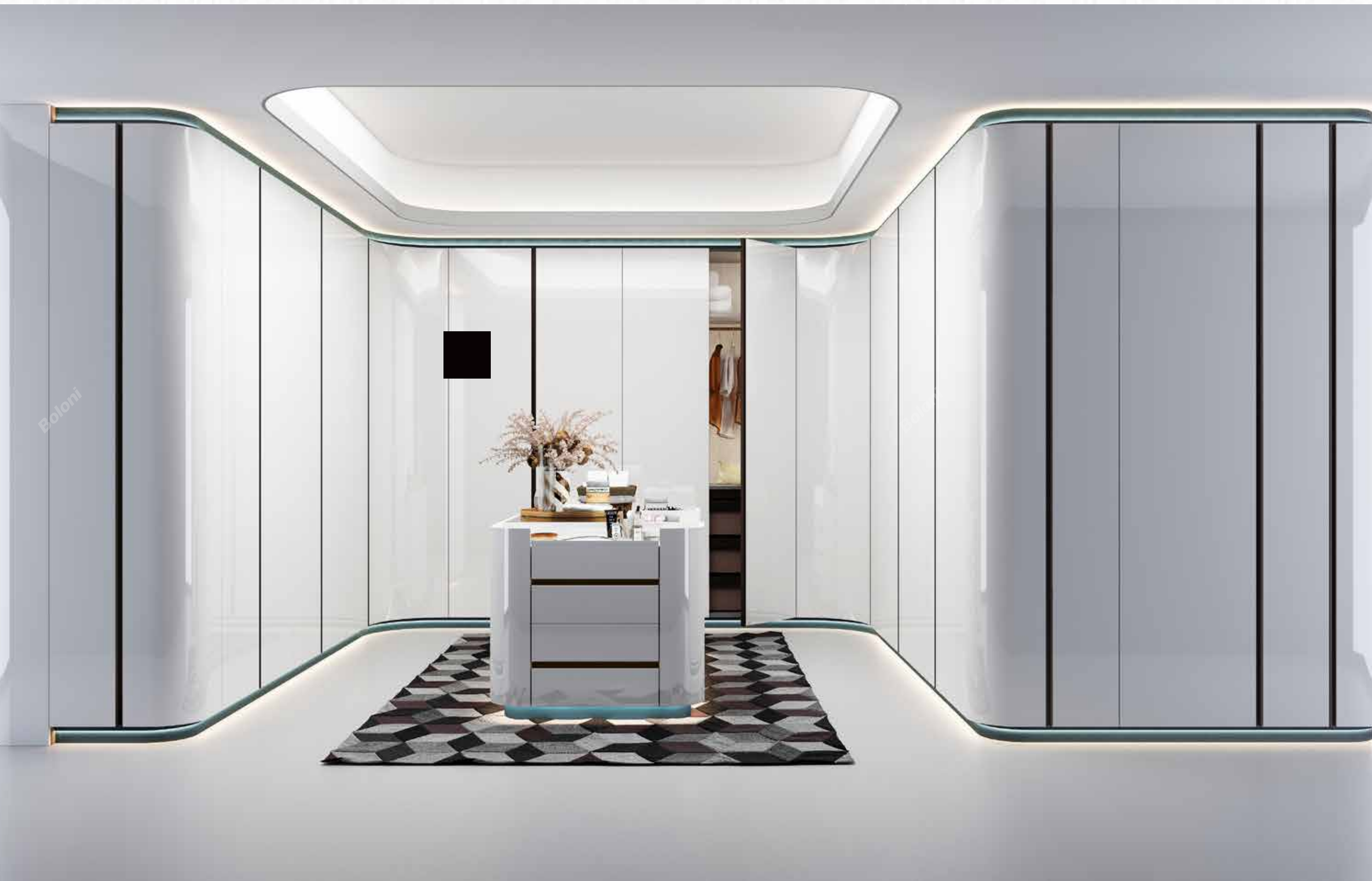
90/ Wooden Swing Door Panel

MASSA DOOR PANEL

Material: Matt Lacquer
Elegant home atmosphere is built through a simple and blunt design. The panel adopts warm and natural color on mild wood, rather than piling upon complicated colors and decorations. It reveals the owner's taste while also bringing about comfort and practicality.



Boloni



Boloni

Wooden Swing Door Panel /93

PURITY ARCURATE DOOR PANEL

Material: High Glossy Lacquer
Handle: Chocolate Color
Exquisite crafts and high-tech lighting constitute the fine details of the panel.
Besides meeting the home arrangement and fashion needs, it also inspires people to live more elaborately.

Boloni

Boloni

LEATHER SWING DOOR PANEL

Extremely simple but dignified and elegant.
The integration of the leather panel with the glass door delivers
the modest contemporary luxury through half-transparent design.

Boloni





LEATHER FLAT DOOR PANEL - SEYERS A

Material: Pebbled Lether, Hermès orange
The integration of lighting behind the panel itself helps outline the line of the cabinet.

Boloni

GLASS SWING DOOR PANEL

The staggered vertical plates divide the space of the cabinet, bringing about agility to its appearance, making it less stark and convenient for storing books and accessories.

Boloni

Boloni



Boloni

Boloni

Boloni

100/ Glass Swing Door Panel

GLASS DOOR PANEL - NEW ENGER

Material: Matt Black Aluminum Frame &
Transparent Glass

Material: High Glossy Lacquer

The panel, with an integrated handle, adopts
aluminum to edge the tempered glass panel.





Boloni

Glass Swing Door Panel /103

GLASS DOOR PANEL - PAISLEY

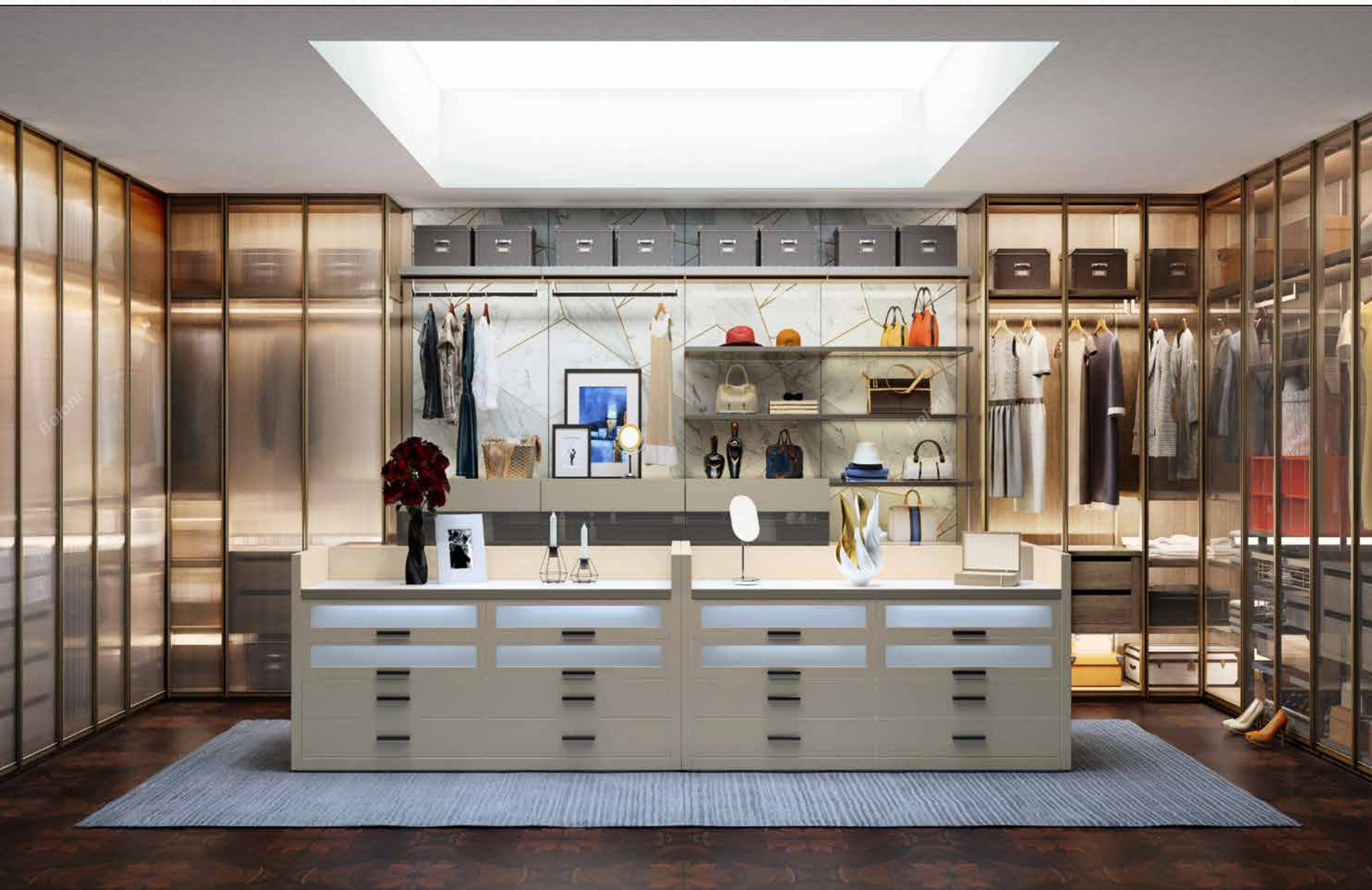
Material: Chocolate Aluminum Frame & Gray Transparent Glass
Paisley is a high-end fashion product with a narrow aluminum frame and tempered glass structure to make the product airier.

104/ Glass Swing Door Panel

GLASS DOOR PANEL - IRELAND B

Material: Matt Black Aluminum & Gray
Transparent Glass
Smooth and narrow frame presents a tough
and hard temperament. Simple but elegant.





GLASS DOOR PANEL - NEW BERNIA

Material: Copper Brushed Frame & White Wave Transparent Glass
The transparent door panel design perfectly presents a sense of order, organization, and modernity.



BERKELEY MOBILE ISLAND

108/ Glass Swing Door Panel

GLASS DOOR PANEL - COLORFUL BERNIA

Material: Champagne Gold Aluminum & Transparent Glass

The minimalist line shape, together with invisible handle design, perfectly shows a modern light luxury style. It is the storage cabinet for this space. With the mobile island, the cabinet looks more calm and elegant.





GLASS DOOR PANEL - COLORFUL BERNIA

Material: Vermilion Red Aluminum & Transparent Glass
Colorful Bernia adopts cinnabar red aluminum frame and transparent glass as the material. The ultra-high glass cabinet with aluminum frame not only increases the storage space but also displays grandeur, showing the item inside clearly with great transparency on all sides. The cabinet has good load-bearing capacity and is aldehyde-free and environmentally friendly.

Boloni

Boloni

GLASS SLIDING DOOR PANEL

The door itself is the best showcase of elegance.
With its easy and smooth functioning, the door presents such temperament at your home to the largest extent.
It could also bring you an avant-garde and unique light-luxury experience.

Boloni





Glass Sliding Door Panel /115

**GLASS DOOR PANEL
- COLORFUL BERNIA**

Material: Chocolate Aluminum & White
Wave Glass
Modern minimalist style shown through the
narrow metal frame with integrated handle.
Light and flexible.

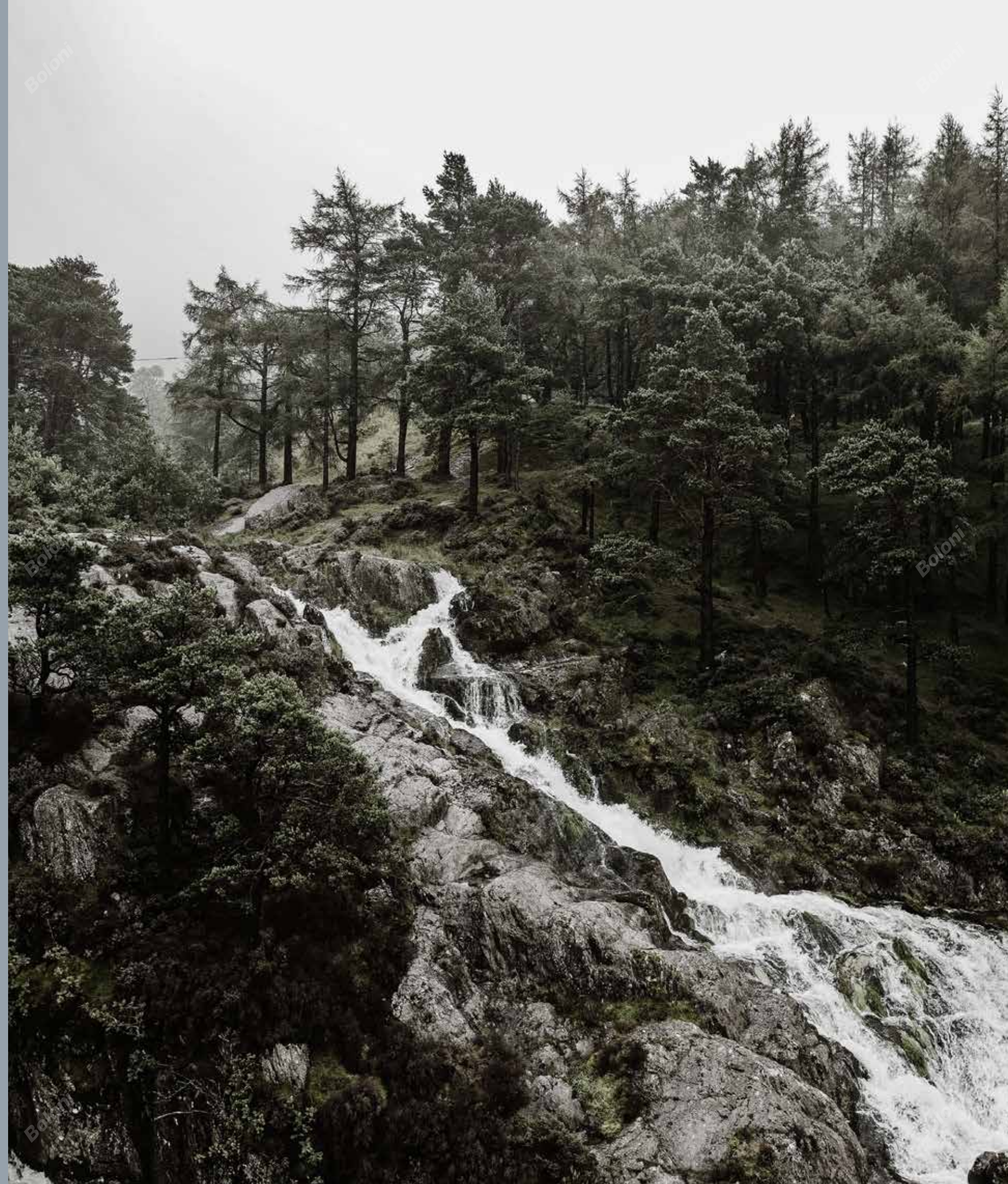
Boloni

Boloni

Boloni

INTERIOR DOOR SYSTEM

The design combination of the interior door and the wall panel, bringing the ultimate life experience with the art and technology without boundaries.



Boloni

Boloni

Boloni



Boloni

Boloni

PURITY

Door Panel: Pure
Door Frame: Siena 60
Material: Melamine Finish
Mortise & Handle: Mute Lock A25
The most simple and classic door without any modelling.
A variety of materials and design forms present the design concept of "less is more".

LINO

Door Panel: Lino 2
Door Frame: Siena 1

Material: Classic Wood Veneer
Lock: Mortise & Handle: Mute Lock A25

The Lino series is the only product in all products named after Mr. Lino Codato, the former Italian chief designer of Boloni. The Lino door is favored by the public with its unique crafts and beauty for 20 years and has become a classic among inner door products.





ELF

Door Panel: Elf
Door Frame: Master
Material: High Glossy Lacquer Finish
Mortise & Handle: Mute Lock A5
Elf door is a typical Italian design with a combination of metal and wood. With their complementary feature, the two materials add warmth and highlight to each other. Metal edges of different colors perfectly match the material and style of panels, clearly outlining the panel and frame. Such design not only meets the individual needs of customers, but also reflects the Italian-style "minimalism and high-tech luxury".

SWING DOOR R – BERNIA

Material: Chocolate Aluminum & Frosted Glass 8
Mortise & Handle: Single Lock G0909
Bernia series follows the Italian-style in making the product
high, thin and transparent.
The 2.8-meter super-high design realized grandeur. The
13mm wide ultra-thin metal frame present detailed elegance.





BARN DOOR - PURITY

Material: Melamine
Mortise & Handle: Sliding Door Handle M3
Slide rails and other hardware are invisible whether the door is open or closed. The door is also known as "ghost door" with its silent feature.



DOOR PANEL – BERNIA GS1

Material: Chocolate Aluminum&Gray Frosted Glass
Mortise & Handle: Swing Lock G0909



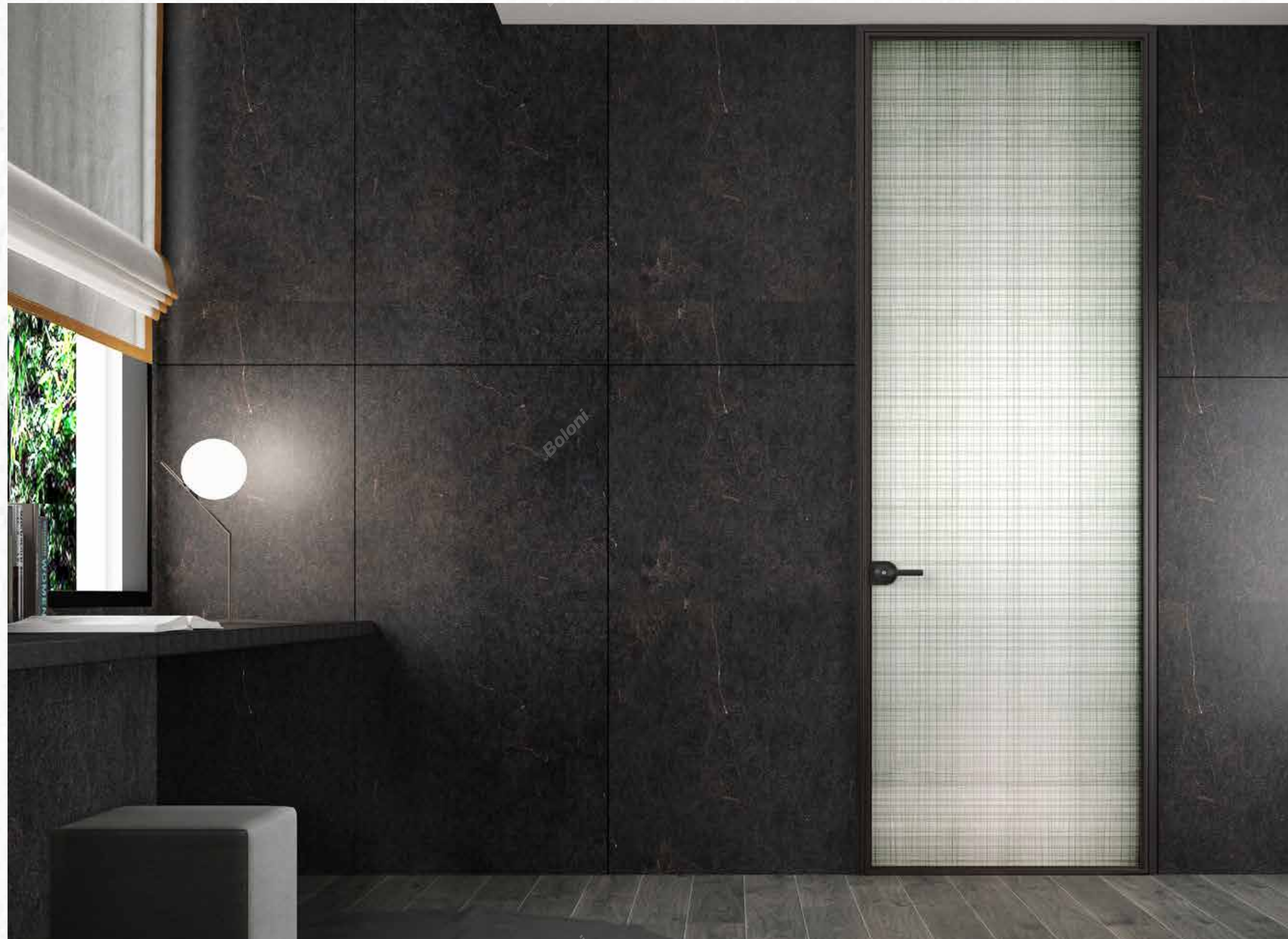
DOOR PANEL – BERNIA D

Material: Chocolate Aluminum & Horizontal Laminated Glass
Mortise & Handle: Mute Lock F7

132/ Interior Door System

DOOR FRAME - BERNIA R

Material: Chocolate Aluminum &
Silk-screen A Transparent Glass
Mortise & Handle: Swing Lock G0909



Boloni

Boloni



DOOR FRAME - BERNIA G

Material: Chocolate Aluminum & Transparent Glass
Mortise & Handle: Swing Lock G0909

136/ Interior Door System



DOOR FRAME - BERNIA R

Material: Chocolate Aluminum & Transparent Glass



BERNIA SLIDING DOOR - GS1

Material: Aluminum & Transparency Glass 8



BERNIA SLIDING DOOR - D

Material: Aluminum & Laminated Glass 8



BERNIA SLIDING DOOR - H

Material: Aluminum & Transparency Glass 8

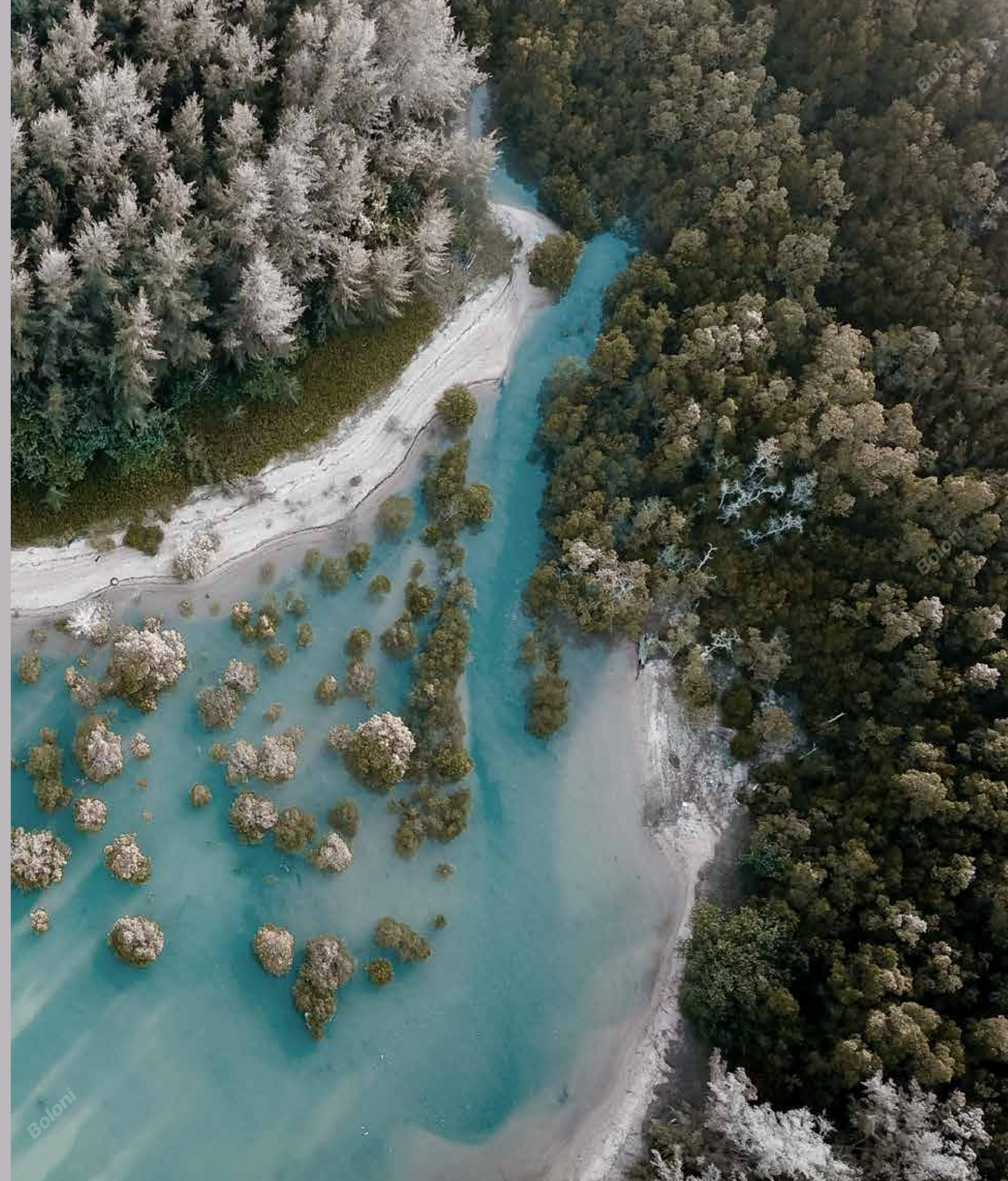
Boloni

Boloni

Boloni

WALL PANELING SYSTEM

Achieving true integration of the entire wall paneling system, encompassing doors, walls, and cabinets.



Boloni

Boloni

Boloni

PURE WALL PANELING SYSTEM

Material: Wood Veneer
Staggered height and symmetrical design follow the aesthetic principle of "symmetry and balance", which heightens the space. With lightings, light and shadow are better presented on the wall.





PURITY WALL PANELING SYSTEM

Material: Wood Veneer
Staggered height and symmetrical design follow the aesthetic principle of "symmetry and balance", which heightens the space. With lightings, light and shadow are better presented on the wall.

NARIC WALL PANELING SYSTEM

Material: Matt Lacquer
It is composed of neat and orderly lines, creating a comfortable and natural atmosphere.
The concise and powerful flowing lines express a visually immersive, stress-free, and minimalist living environment.





Boloni

VENICE WALL PANELING SYSTEM

Material: Matt Lacquer
Venice's fascination flourishes for "water", with winding water alleys and flowing waves constituting a romantic dream floating on the blue water. Such a long-lasting idyllic scene. The combination of classic elements and modernism makes the wall panel simple and classical.

152/ Wall Paneling System

ZINICE WALL PANELING SYSTEM

Material: High Glossy Lacquer
The combination of metal lines and shaped core panels shows the "high-tech luxury" philosophy of Italian design, and perfectly interprets the noble and luxurious temperament on the wall panels, which is natural and royal.





WOODEN GRILLE

Material: Wood Veneer



Boloni
INTERNATIONAL

BOLONI INTERNATIONAL TRADING(BEIJING) CO., LTD

Telephone: +86 189 1001 8880 Email: international@boloni.com
Website: www.boloni.com